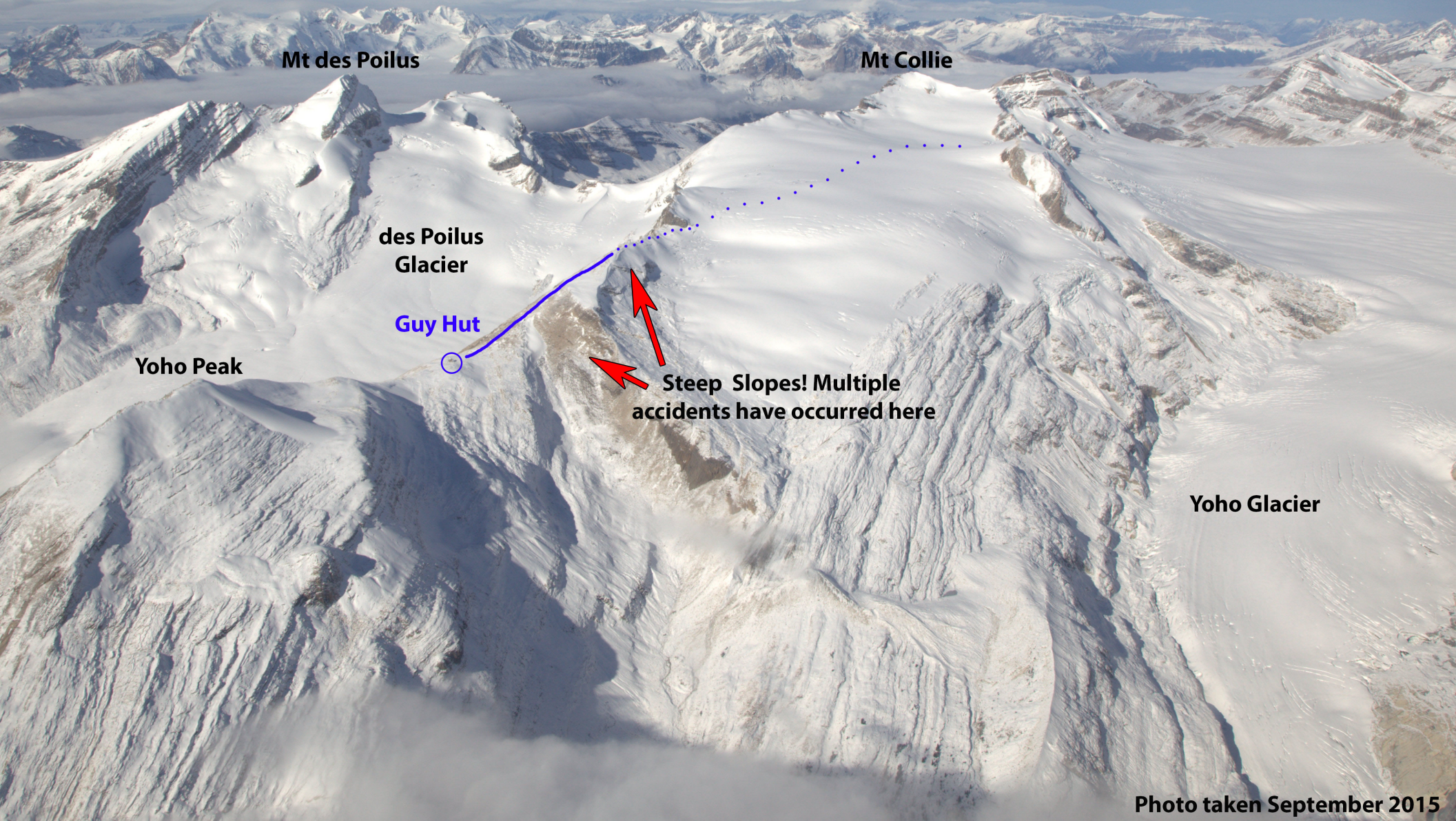


Guy Hut Approach Beta

Prepared by Banff, Yoho & Kootenay National Parks Visitor Safety Team, April 2017



Mt des Poilus

Mt Collie

des Poilus
Glacier

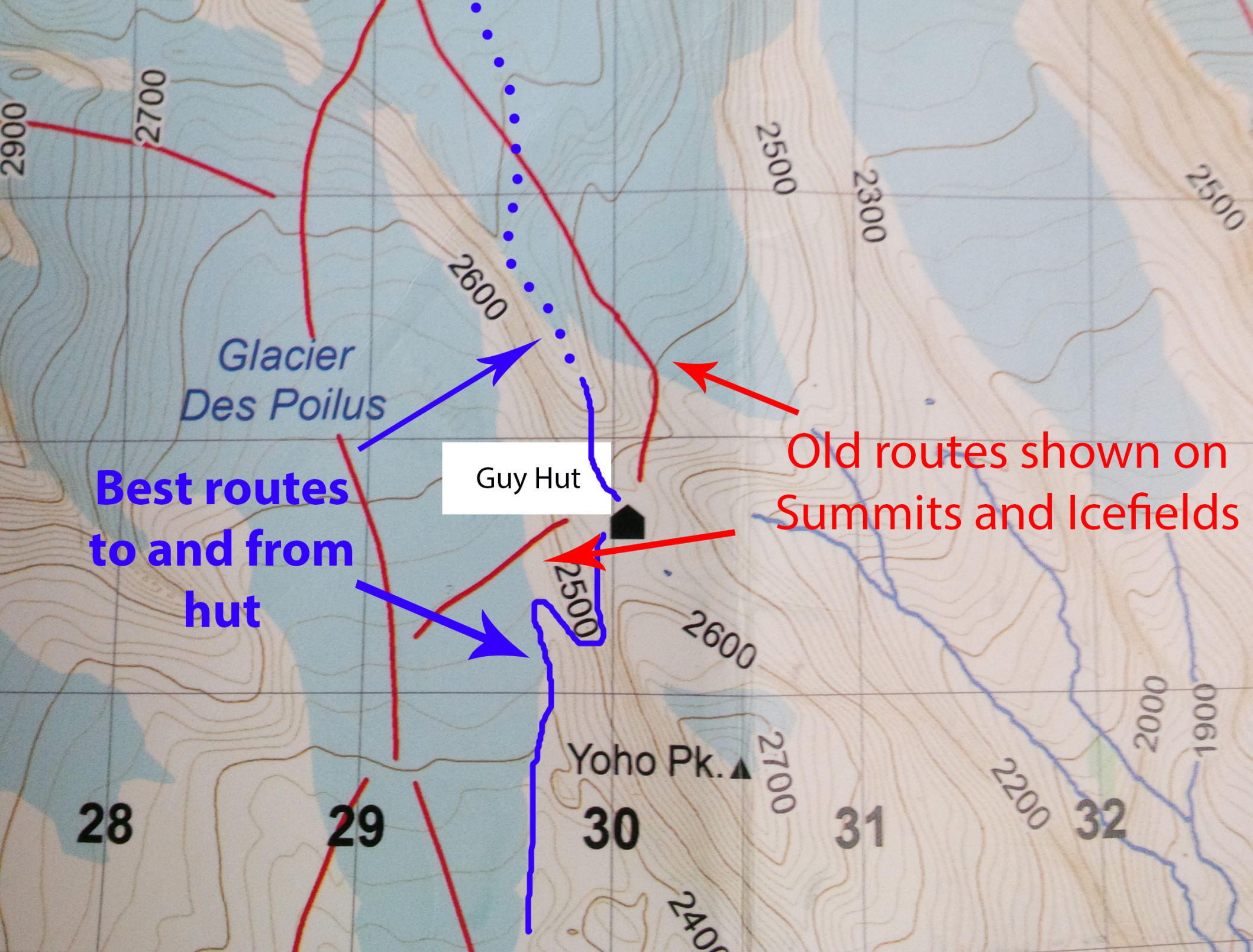
Guy Hut

Yoho Peak

Steep Slopes! Multiple
accidents have occurred here

Yoho Glacier

Photo taken September 2015



Glacier
Des Poilus

Guy Hut

Old routes shown on
Summits and Icefields

Best routes
to and from
hut

Yoho Pk.▲

28

29

30

31

32

2700

2500

2300

2500

2600

2500

2600

2700

2400

2200

2000

1900

Entrance to ridge above Guy Hut from Collie Glacier

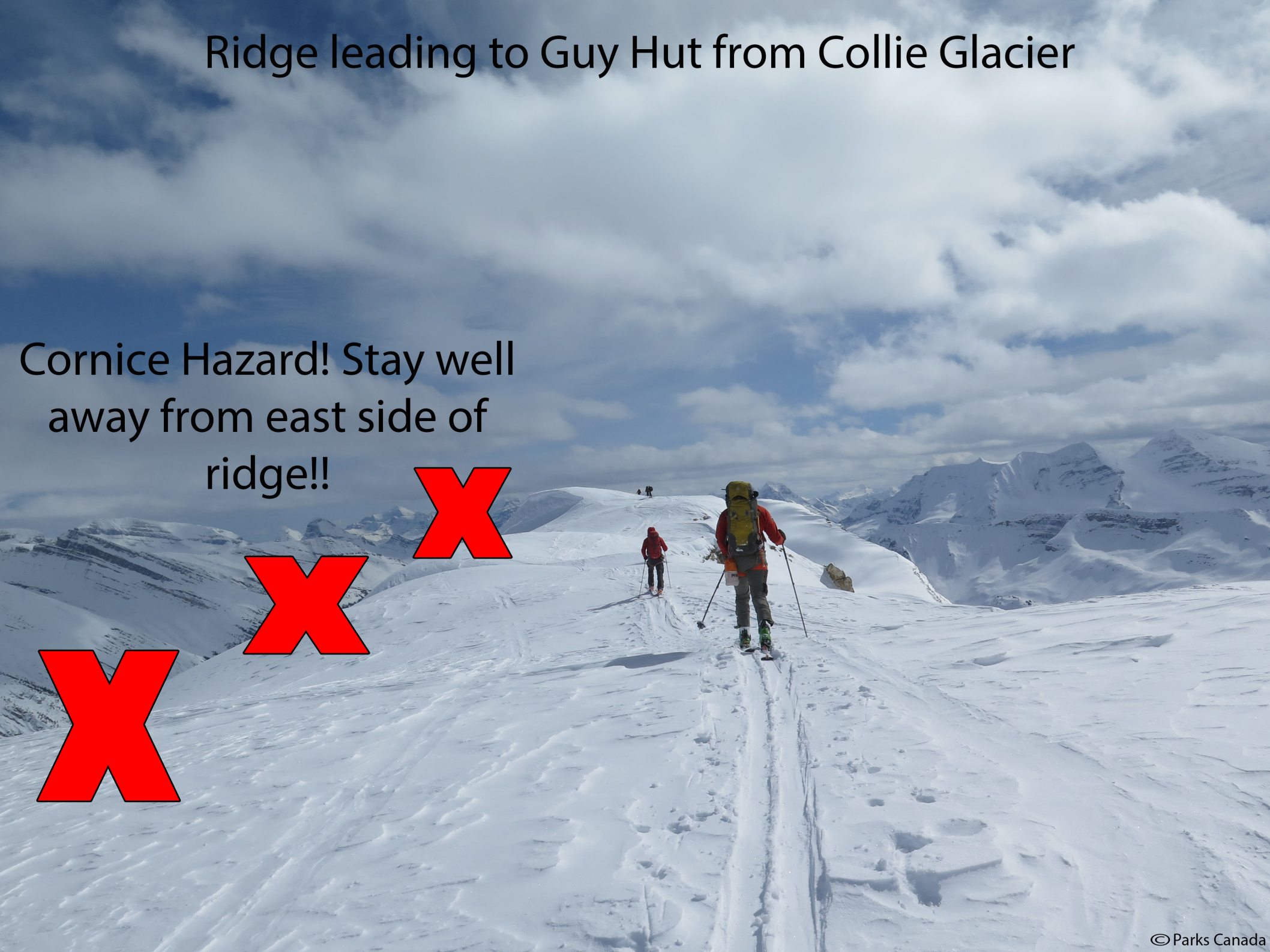
Mt. Collie

● Entry point for ridge leading to Guy Hut ~ 2750m



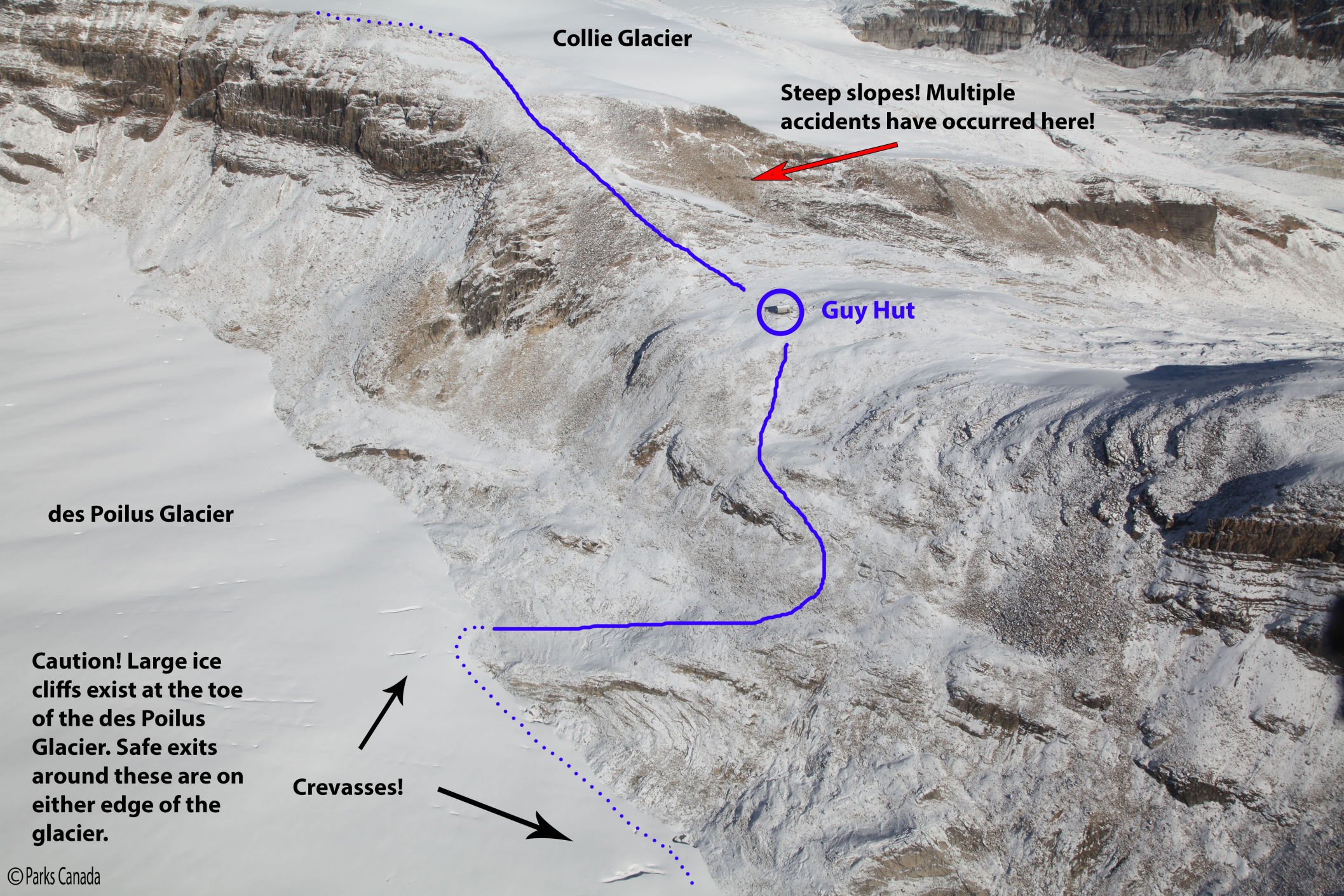
Ridge leading to Guy Hut from Collie Glacier

Cornice Hazard! Stay well
away from east side of
ridge!!



Slope above Guy Hut leading to the Collie glacier

Steep slope! Multiple accidents
have occurred here!



Collie Glacier

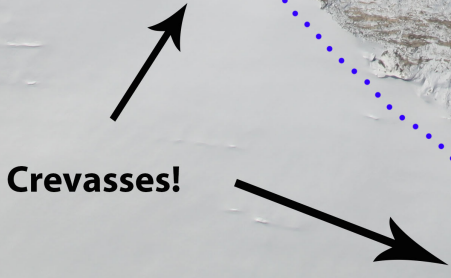
Steep slopes! Multiple accidents have occurred here!



Guy Hut

des Poilus Glacier

Caution! Large ice cliffs exist at the toe of the des Poilus Glacier. Safe exits around these are on either edge of the glacier.



Crevasses!